

PLANNING YOUR VISIT



OPENING TIMES

The Big Bang Fair is open to schools from 19 to 21 June 2024 in half-day sessions.

- Morning session: 9am to 12pm
- Afternoon session: 1pm to 4pm

Please do not exceed your group booking size as we may not be able to accommodate a larger group. Your booking details will be displayed on your e-ticket.

The Big Bang Fair is open to home educators with young people aged 10 to 13 on Friday 21 June from 9am to 12pm, or 1pm to 4pm.

HEALTH & SAFETY

The Big Bang Fair's visiting schools [risk assessment is available](#) to download.

VENUE DETAILS

The Big Bang Fair takes place in hall 12 of the NEC.

Address: NEC, Birmingham, West Midlands, B40 1NT

TRAVEL INFORMATION

If arriving by coach, [please display this sign](#) in your window to ensure you are directed to the appropriate car park. Please follow any instructions from the traffic management team.

If you require access for disabled coach parking, we will contact you separately with this information.

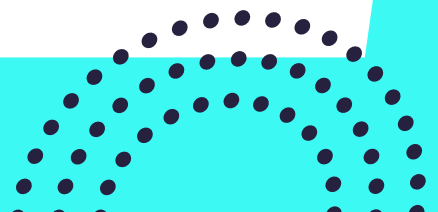
Please note there is a [parking charge](#), further details are available on the NEC website.

CHECK-IN INFO

Upon arrival at the NEC, please follow the signs and guides towards the registration area.

Please ensure your whole group check-in together. At check-in, you will be presented with lanyards.

Please wear these at all times, you will not be allowed into the event areas without them.



PLANNING YOUR VISIT



ACCESSIBILITY

The Big Bang Fair and NEC aim to be accessible for all.

Find out more about [facilities at the NEC here](#).

If you would like to talk to a member of the team about specific requirements for your group, please contact info@thebigbang.org.uk.

SOCIAL MEDIA

Get the latest news about The Big Bang Fair by following us on social media:

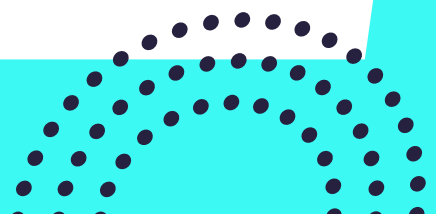
- **Youtube:** [/BigBangUKSTEM](#)
- **Twitter:** [@BigBangUKSTEM](#)
- **Facebook:** [@BigBangUKSTEM](#)
- **Instagram:** [@BigBangUKSTEM](#)

We'd love to see what you're up to! Please tag us in your posts using #BigBangFair

GOT QUESTIONS?

We are happy to advise group leaders who are planning or booking a visit. Please email info@thebigbang.org.uk with your query and we will aim to respond to you within 72 hours.

When at The Big Bang Fair please visit the Information Desk or ask one of our many volunteers.



LIVE SHOW TIMES



WEDNESDAY 19 JUNE:

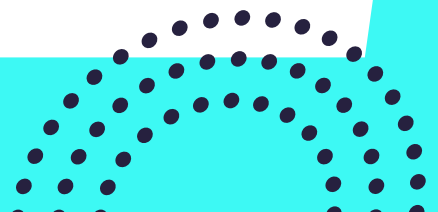
09:45 - 09:55	Guess Who?
10:00 - 10:30	Adventures in AI, Royal Institution
10:45 - 10:55	Guess Who?
11:00 - 11:30	Human Guinea Pig Show, Medical Mavericks
13:15 - 13:25	Guess Who?
13:30 - 14:00	Human Guinea Pig Show, Medical Mavericks
14:15 - 14:45	Adventures in AI, Royal Institution

THURSDAY 20 JUNE:

09:45 - 09:55	Guess Who?
10:00 - 10:30	Adventures in AI, Royal Institution
10:45 - 10:55	Guess Who?
11:00 - 11:30	Human Guinea Pig Show, Medical Mavericks
13:30 - 13:40	Guess Who?
13:45 - 14:15	Human Guinea Pig Show, Medical Mavericks
14:30 - 14:40	Guess Who?
14:45 - 15:15	Adventures in AI, Royal Institution

FRIDAY 21 JUNE:

09:45 - 09:55	Guess Who?
10:00 - 10:30	Adventures in AI, Royal Institution
10:45 - 10:55	Guess Who?
11:00 - 11:30	Human Guinea Pig Show, Medical Mavericks
13:30 - 13:40	Guess Who?
13:45 - 14:15	Human Guinea Pig Show, Medical Mavericks
14:30 - 14:40	Guess Who?
14:45 - 15:15	Adventures in AI, Royal Institution



SPONSORS

LED BY



MAJOR SPONSORS



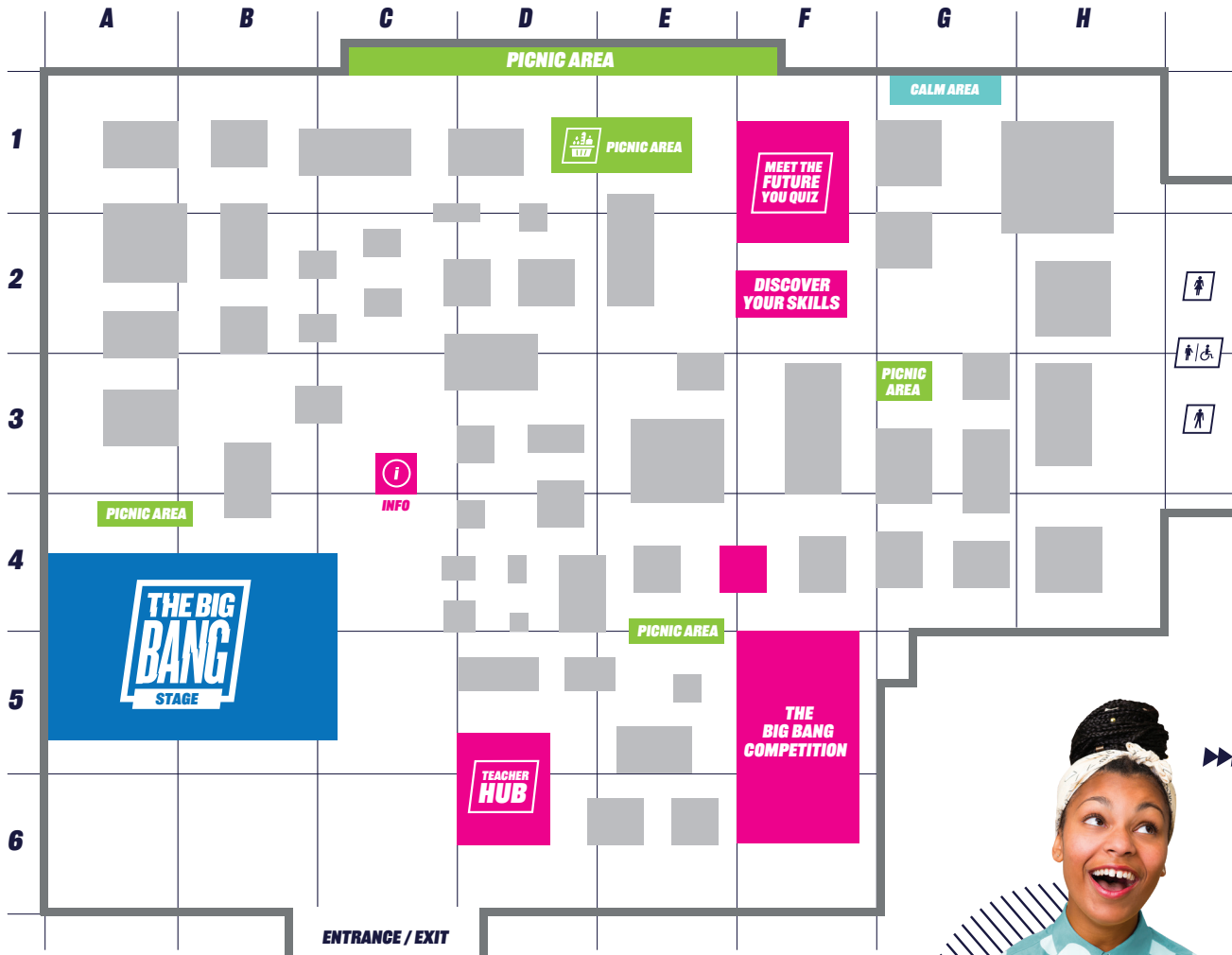
IN PARTNERSHIP WITH



CORPORATE SUPPORTERS



EDUCATION SUPPORTERS



- Accenture **D5**
- All About Theatre **A2**
- Association for Black & Minority Ethnic Engineers (AFBE) **D4**
- AtkinsRéalis **G4**
- BBC **E5**
- The Big Bang Competition (Wednesday Only) **F5**
- Climate Museum UK **C4**
- Climate Schools Programme **D1**
- Code4Drones **B3**
- Discover Materials **G1**
- easyJet & easyJet Holidays **C2**
- EPCC, University of Edinburgh **D3**
- ESB Energy **D5**
- Generation Aviation (Aerobility, Jon Egging Trust, Royal Aeronautical Society and UK Civil Aviation Authority) **C2**
- Institution of Mechanical Engineers (IMechE) **D4**
- IMI **D2**
- Imperial College London (Thursday and Friday only) **F5**
- Institute of Mathematics and its Applications **D2**
- Intellectual Property Office (IPO) **H2**
- JLR (Jaguar Land Rover) **E3**
- JCB **F3**
- Johnson & Johnson MedTech **G4**
- MAKE UK **D4**
- Medical Mavericks **A3**
- National Grid **D2**
- National Highways **D3**
- newcleo Ltd **D4**
- Nissan Technical Centre Europe **C3**
- Ocean Generation **E6**
- Rampaging Chariots **A1**
- Rolls-Royce PLC **C1**
- Routes into Rail (Amey, East Coast Digital Programme, High Speed Two Ltd, Network Rail and Rail Delivery Group) **A2**
- Royal Entomological Society **E6**
- Royal National Lifeboat Institution (RNLI) **E2**
- Society for Radiological Protection **H3**
- Specsavers **G3**
- SYSTRA Ltd **D4**
- Tata Consultancy Services **E3**
- Teacher Hub (National Highways, Institution of Engineering and Technology (IET), EngineeringUK and Neon) **D6**
- Tech She Can **E5**
- Technicians: We make the difference **G3**
- The Action Against Stunting Hub **H4**
- The Operational Research Society **B2**
- Thinktank - Birmingham Science Museum **H1**
- The Tree Council **B2**
- UK Atomic Energy Authority **D3**
- University of Sheffield, Women in Engineering Society **E4**
- University of Warwick **G2**
- University of Wolverhampton **G3**
- Zoolab UK **D4**

KEY

- TECHNOLOGY & INNOVATION
- HEALTH & WELLBEING
- ENVIRONMENT & SUSTAINABILITY
- ENERGY & TRANSPORT

